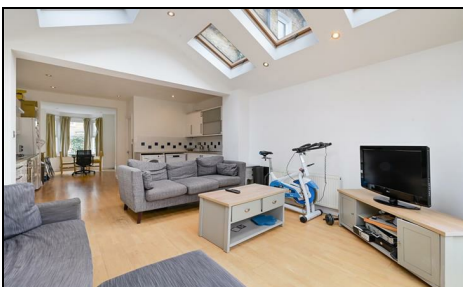


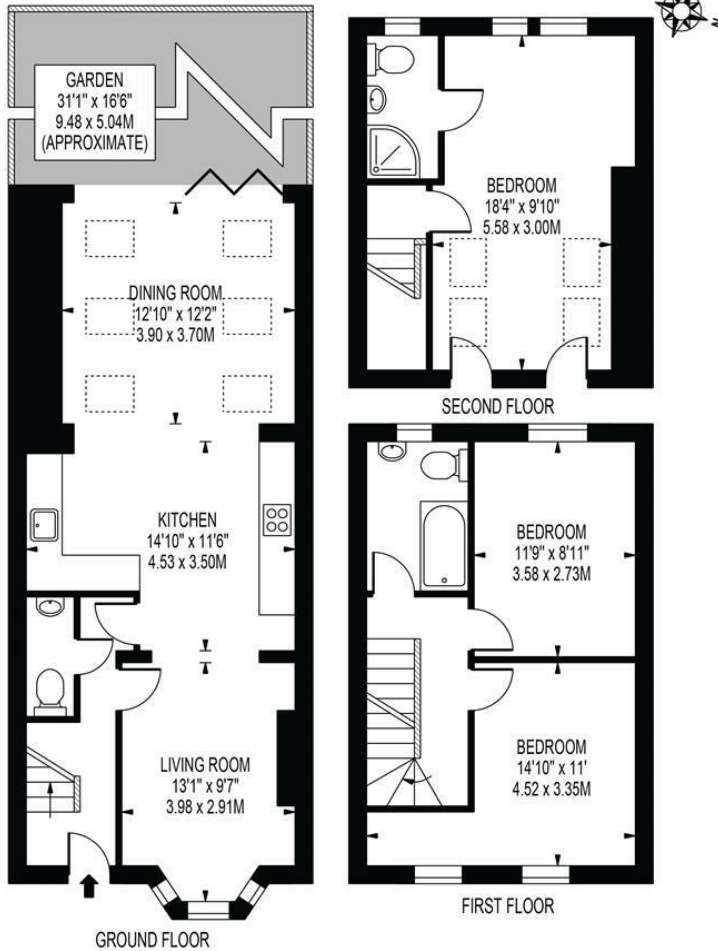
Hardy Road Wimbledon, SW19 1JB

£925,000 Freehold



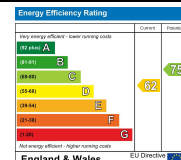
A stunning well presented three double bedroom, Victorian family home located within the highly sought after Battles area, being within easy reach of both Northern Line and mainline stations, Wimbledon town centre and excellent local schools. On the ground floor is a spacious through reception room which leads into a stunning open-plan kitchen/dining area with bi-fold doors that open out to a lovely garden. Upstairs are two double bedrooms, a modern family bathroom whilst the principle bedroom with en-suite is in the converted loft, all done to a great specification. Sold with no onward chain, houses in Battles of this quality are rare at present so an early viewing is recommended.

HARDY ROAD
 APPROXIMATE GROSS INTERNAL FLOOR AREA: 1119 SQ FT - 104.00 SQ M



FOR ILLUSTRATION PURPOSES ONLY
 THIS FLOOR PLAN SHOULD BE USED AS A GENERAL OUTLINE FOR GUIDANCE ONLY AND DOES NOT CONSTITUTE IN WHOLE OR IN PART AN OFFER OR CONTRACT.
 ANY INTENDING PURCHASER OR LESSEE SHOULD SATISFY THEMSELVES BY INSPECTION, SEARCHES, ENQUIRIES AND FULL SURVEY AS TO THE CORRECTNESS OF EACH STATEMENT.
 ANY AREAS, MEASUREMENTS OR DISTANCES QUOTED ARE APPROXIMATE AND SHOULD NOT BE USED TO VALUE A PROPERTY OR BE THE BASIS OF ANY SALE OR LET.

- Fully Extended Victorian Terraced House
- Three Bedrooms
- Two Bathrooms
- Through Reception Room
- Open Plan Kitchen/Diner
- Sought After Battles Location
- Close to Northern Line and Wimbledon Town
- Chain Free
- EPC Rating D
- Council Tax Band E



For Free Mortgage Quote and Best Mortgage Rates, call an Ellisons Mortgage Advisor on 020 8944 9494



Although these particulars are believed to be correct, their accuracy is not guaranteed and they do not form part of any contract.

Celebrating 30 years of successful Sales and Lettings in Merton

